



Shaftsbury STP 014-1(6) Regional Concerns Meeting

Vermont Route 67 – Bridge #1 over Cold Spring Brook

June 13, 2023

Introductions

SHAFTSBURY STP 014-1(6)

Adam Goudreau, P.E.

VTrans Project Manager

David Peterson, P.E.

VTrans Design Engineer

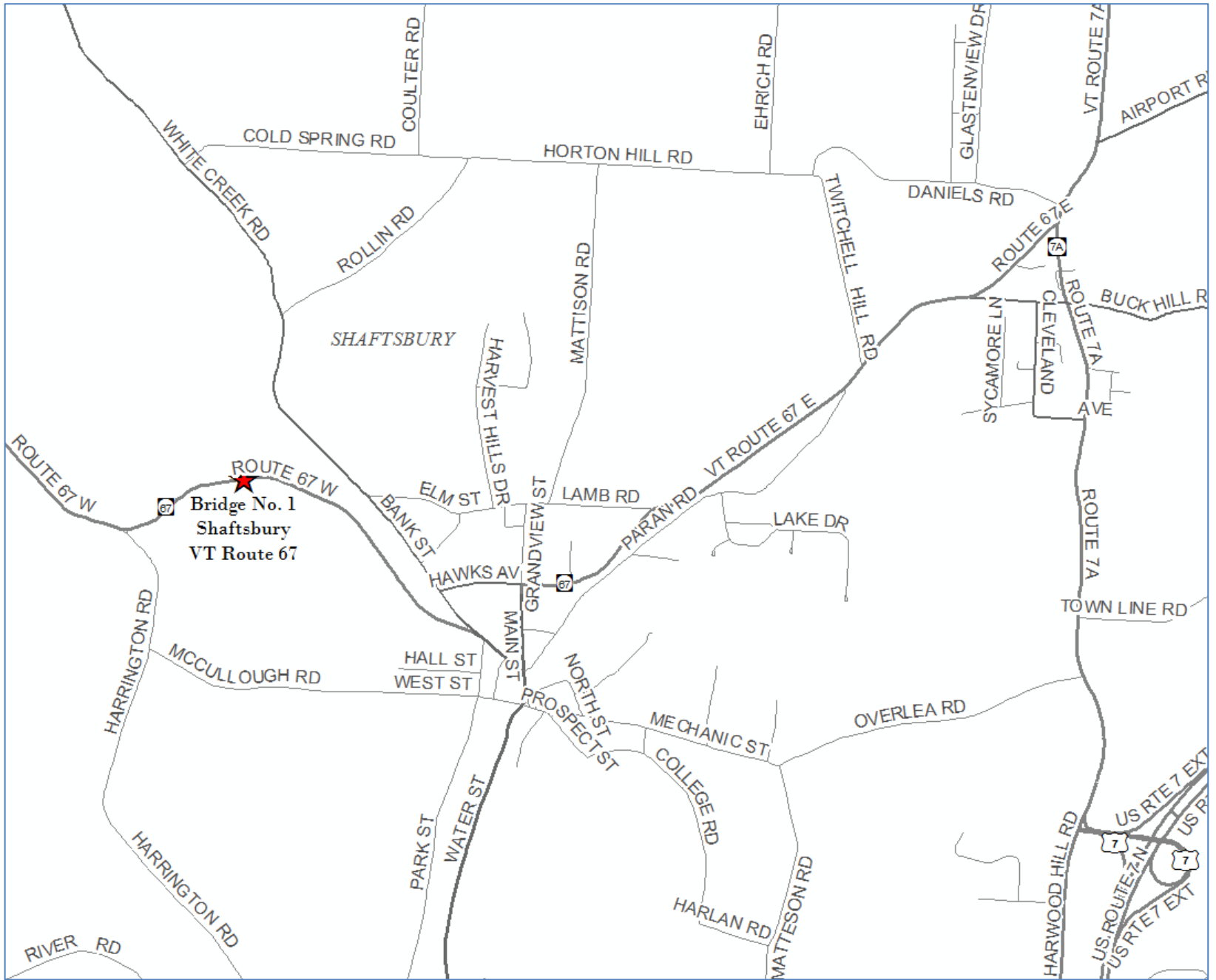
SHAFTSBURY VTRY(20)

Renée Layton

VTrans Project Manager

Meeting Overview

- VTrans Project Development Process
- Shaftsbury STP 014-1(6) Project Overview
 - Proposed Design
 - Maintenance of Traffic
 - Construction Schedule
- Shaftsbury VTRY(20) Project Overview
 - Design
 - Construction Schedule
- Questions



Location Map



Bridge 1
Project Location

VTrans Project Development Process



Looking West over Bridge



Existing Conditions - Bridge #1

- Roadway Classification – Rural Minor Arterial
- Bridge Type – 20' Span Concrete Slab Bridge
- Ownership – State of Vermont
- Constructed in 1934

11/28/2012

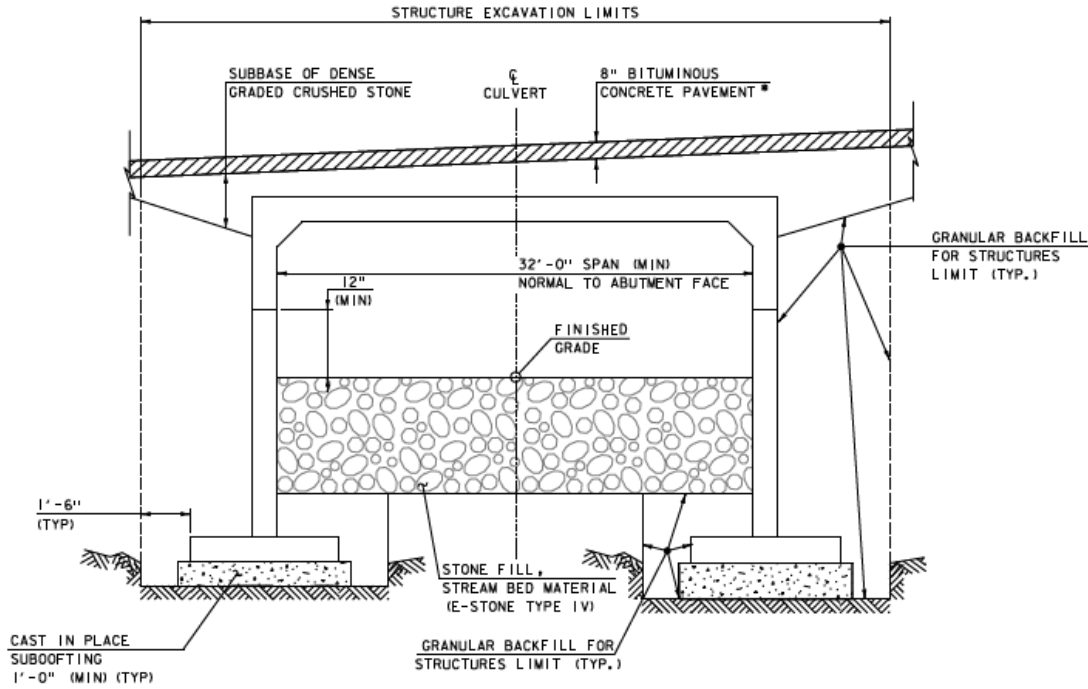
Existing Conditions – Bridge #1

- Eastern abutment is undermining
- Western abutment has aggradation build-up
- Upstream laid-up stone retaining wall is failing
- Bridge does not meet the minimum hydraulic or Bank Full Width Standards
- The bridge soffit has minor cracking with water infiltration and efflorescence
- The shoulders on VT Route 67 are substandard by 2 feet throughout the project area.

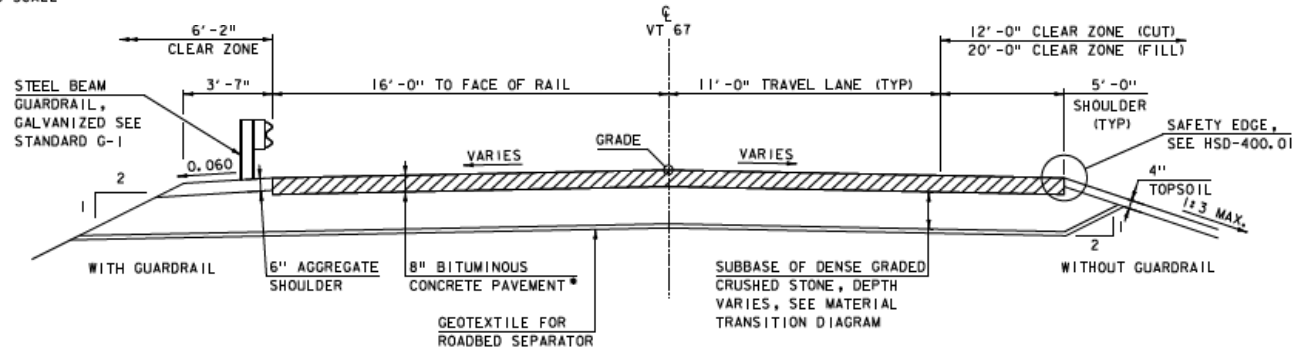
Proposed Structure – Bridge #1

- Full Bridge Replacement – 32' 3-Side Buried Structure
 - Structural deficiencies would be addressed
 - Shortest Construction/Closure Duration
 - 4-week closure
 - Widen to minimum standard (11'/5')
 - 80-year design life
 - Meets Hydraulic Requirements

Typical Sections



PROPOSED TYPICAL SECTION
NOT TO SCALE

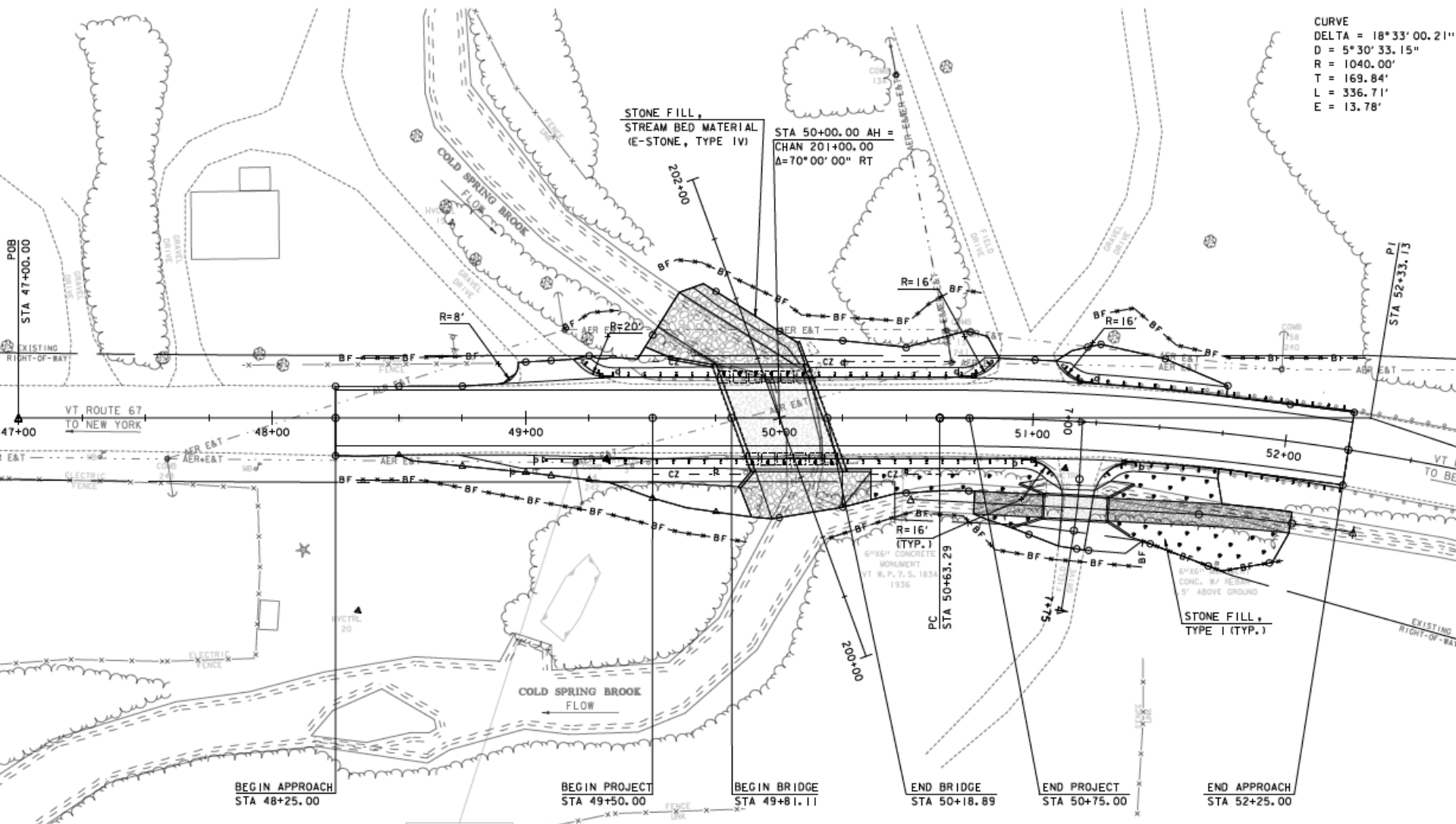


* 2 LIFTS - 1 1/2" BCP TYPE IVS
2 LIFTS - 2 1/2" BCP TYPE IIS

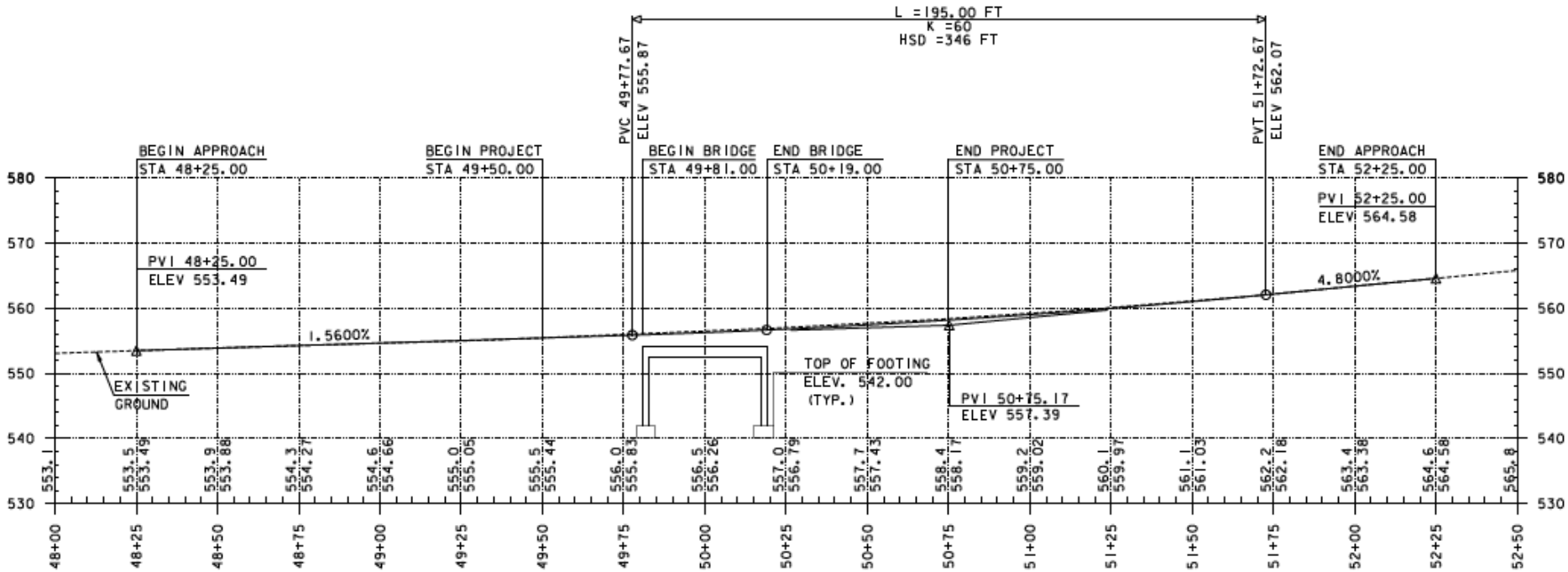
PROPOSED VT 67 TYPICAL SECTION

SCALE 3/8" = 1'-0"

Proposed Layout



Proposed Profile



VT ROUTE 67 PROFILE

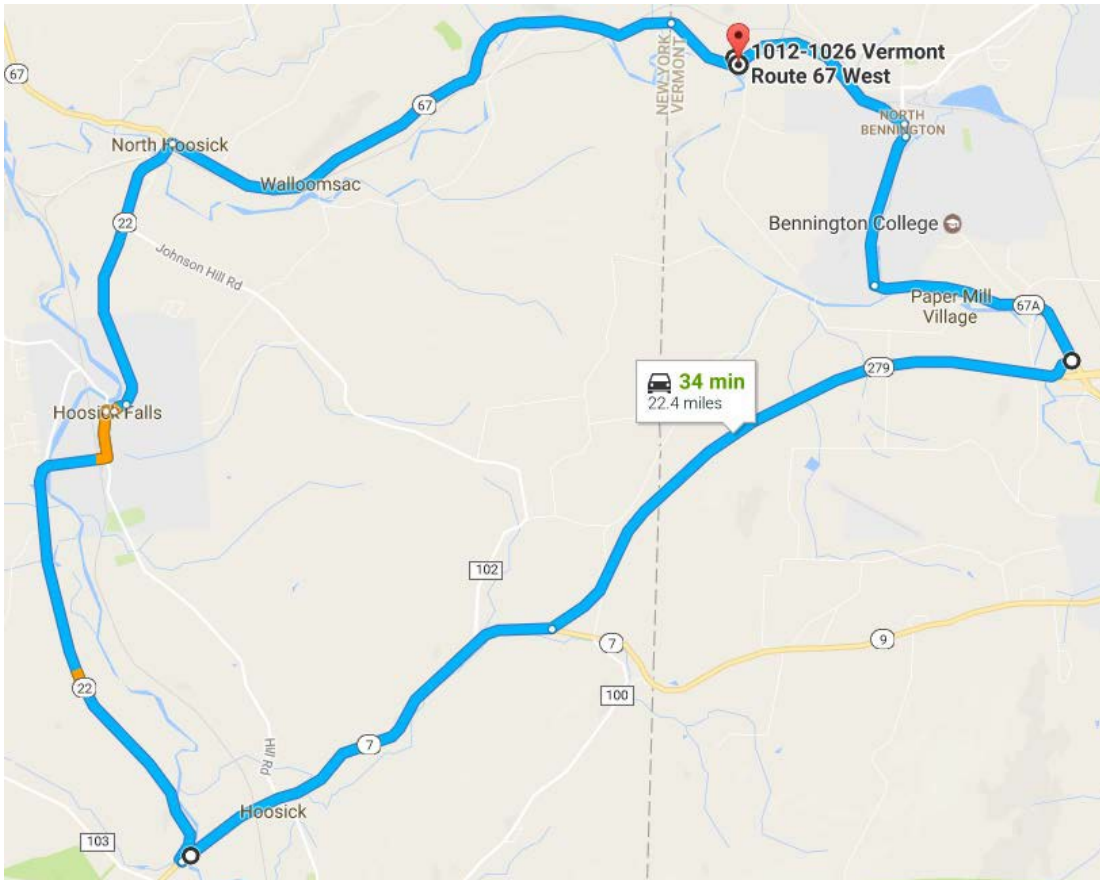
A white rectangular sign with a black border and the words "ROAD CLOSED" in large, bold, black capital letters. The sign is mounted on a white post. The sign is positioned in the center of a road closure barrier. The barrier consists of several horizontal white bars with red diagonal stripes, supported by white posts. In the background, there is a concrete barrier, a chain-link fence, and green trees under a clear blue sky.

**ROAD
CLOSED**

Maintenance of Traffic - Road Closure

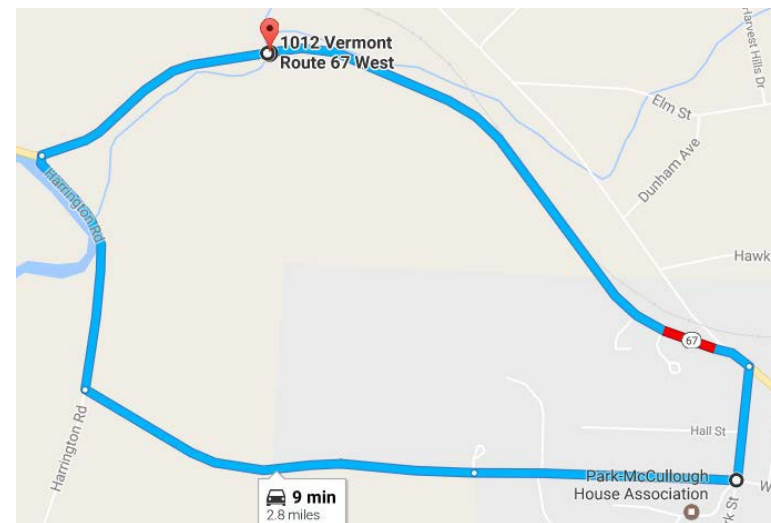
- Regional detour signed by State
- Coordination with New York
- Local Bypass route: 2.8 miles end-to-end

Maintenance of Traffic – Detour



- VT Route 67, to VT Route 67A, VT Route 279, NY Route 7, NY Route 22, and NY Route 67, back to VT Route 67 (22.4 mi end-to-end)

- The shortest local bypass route, has an End-to-End distance of 2.8 miles
 - VT Route 67, to Harrington Road, McCullough Road, West Street, and Church Street, back to VT Route 67



Construction Schedule

- Construction Season
 - 2025
- Construction Duration
 - April 15 – October 31
- Closure Duration
 - 4 weeks
 - To occur between July 1 and Sept 1



Shaftsbury VTRY(20) Project Update

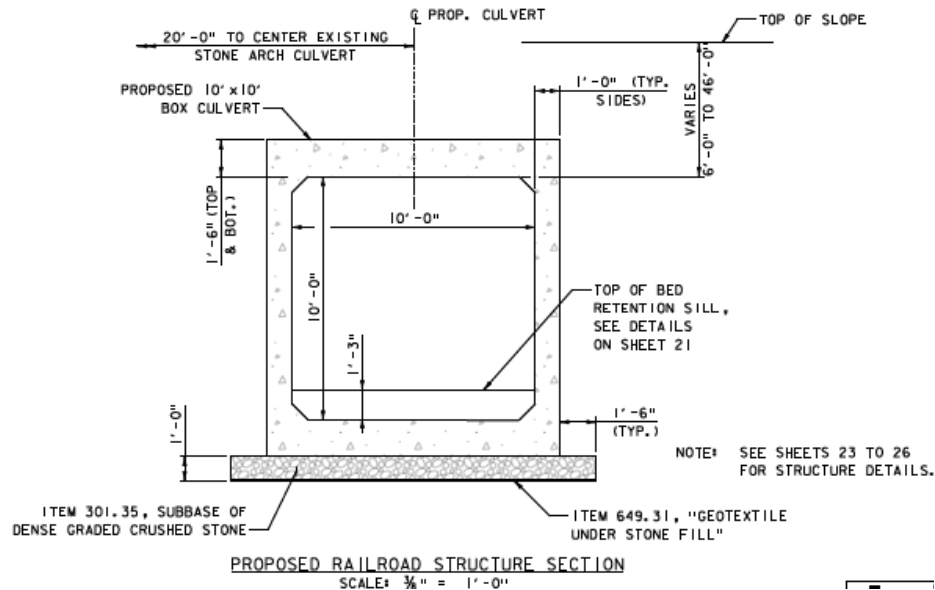
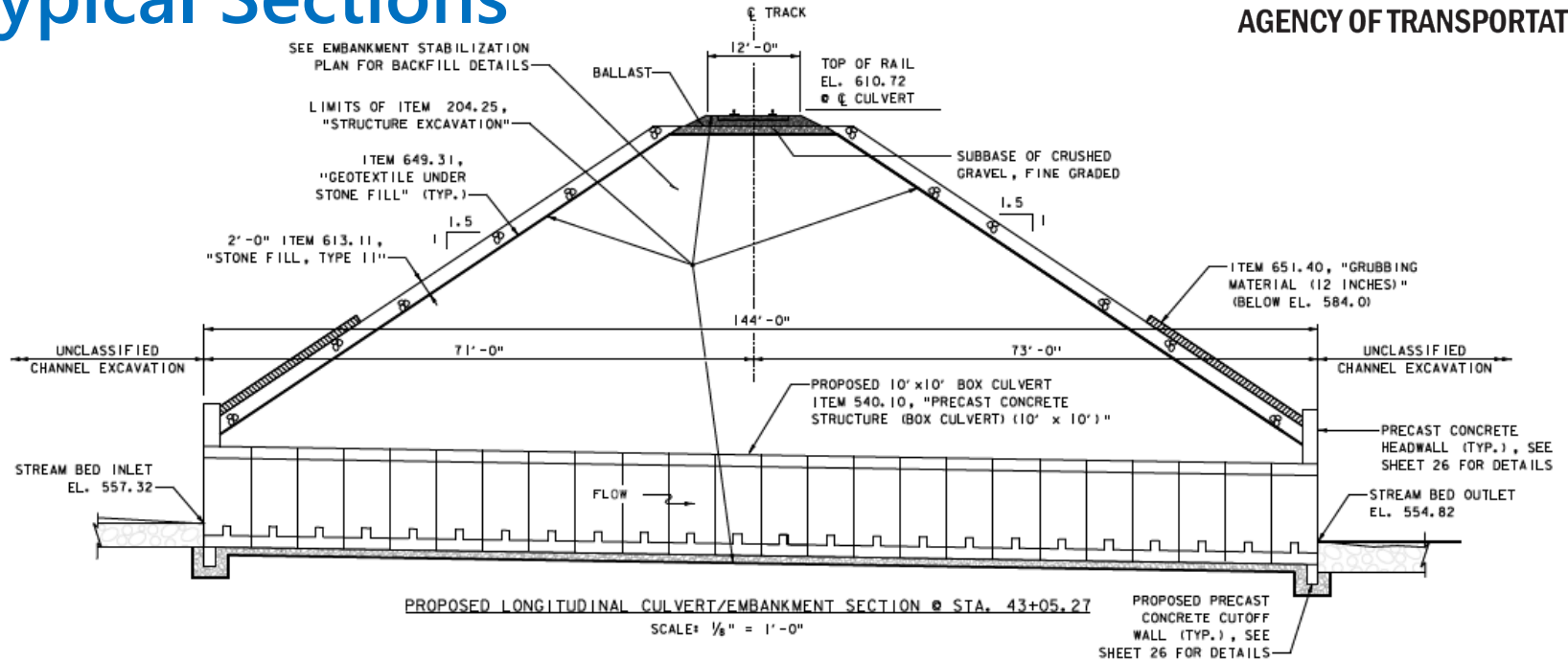
Vermont Railway – Bridge 57.5 over Cold Spring Brook

June 13, 2023

Existing Conditions – Bridge 57.5



Typical Sections



Construction Schedule

- Advertisement June 21
- Construction Season
 - 2024
- Railroad Closure
 - July 31 – Aug 22, 2024 (4 weeks)





Shaftsbury STP 014-1(6) & VTRY (20) Questions and Comments

Cold Spring Brook

June 13, 2023